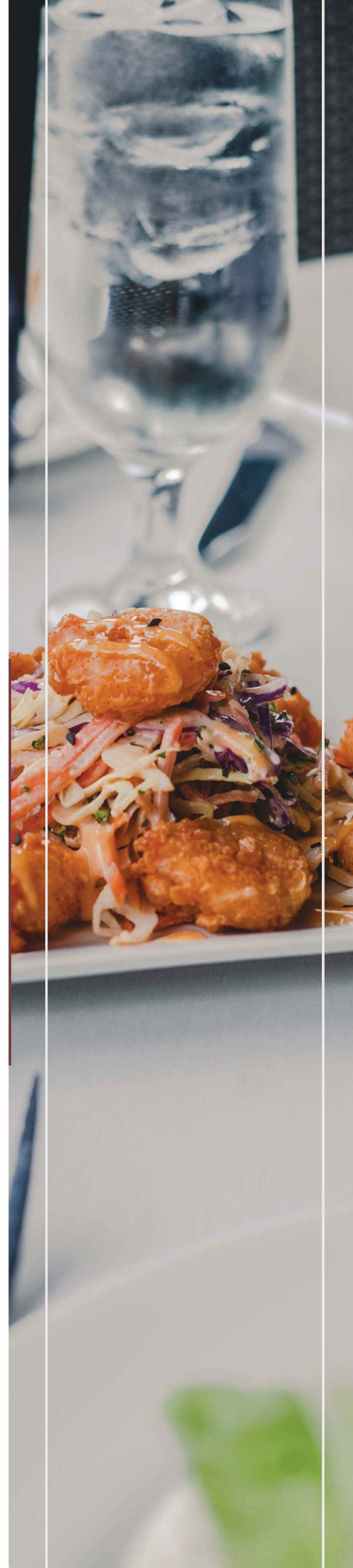


Private
DINING MENU

248.737.7463 • www.prime29steakhouse.com



BUFFET OPTIONS | 90 MIN BUFFET 30 PERSON MIN

\$55 PER PERSON

select any 4 items from tier 1 + 3 items from tier 2

\$65 PER PERSON

select any 3 items from tier 1, 3 items from tier 2 + 2 item from tier 3

\$75 PER PERSON

select any 6 items from tier 1 or 2 + 2 items from tier 3

DESSERT TABLE

add dessert table to any tier selection for additional \$15/pp

TIER ONE

MOZZARELLA & TOMATO CAPRESE

TRUFFLE FRENCH FRIES

ROASTED SWEET CHILI BRUSSELS SPROUTS SMOKED

SEAFOOD DIP

HUMMUS AND CHIPS

GUACAMOLE AND CHIPS

MEDITERRANEAN CHOP SALAD

TRADITIONAL CAESAR SALAD

GRILLED VEGETABLES

SWEET POTATO FRIES

VEGETABLE SPRING ROLLS

CHICKEN TENDERS

TIER TWO

CHEESE & FRUIT DISPLAY

CHEESE & MEAT DISPLAY

COCONUT SHRIMP

AHI TUNA TARTARE

BEEF TIPS

BURGER SLIDERS (CHEESE OPTIONAL)

SWEET & SPICY SESAME CHICKEN BITES

PRIME RIB SLIDER

PENNE PALOMINO

PRIME MEATBALLS

BUFFALO CHICKEN BITES

**INCLUDES SOFT DRINKS + COFFEE. 1.5HR TIME LIMIT ON THE
BUFFET FOOD. BUFFET ATTENDED \$75 (OPTIONAL) ALCOHOL,
TAX, & SERVICE CHARGE ARE ADDED ON TO THE BILL
248.737.7463 • NATASHA@PRIMECONCEPTSDETROIT.COM**



BUFFET OPTIONS

\$55 PER PERSON

select any 4 items from tier 1 + 3 items from tier 2

\$65 PER PERSON

select any 3 items from tier 1, 3 items from tier 2 + 2 item from tier 3

\$75 PER PERSON

select any 6 items from tier 1 or 2 + 2 items from tier 3

DESSERT TABLE

add dessert table to any tier selection for additional \$15/pp

TIER THREE

ORGANIC CHICKEN PICCATA

LAMB CHOP LOLLIPOP - 1.5 PIECES PER PERSON

FAROE ISLAND SALMON

TENDERLOIN OF BEEF- SLICED

GRILLED JUMBO SHRIMP

CHILEAN SEABASS

FILET SLIDERS

BUFFALO CHICKEN SLIDERS

JUMBO SHRIMP COCKTAIL

CAJUN CHICKEN RIGATONI

DESSERT TABLE

MINI TIRAMISU

MINI CHEESECAKE

CHOCOLATE MOUSSE CUPS

FRESH FRUIT

FRESH BAKED COOKIES

INCLUDES SOFT DRINKS + COFFEE. 1.5HR TIME LIMIT ON THE BUFFET FOOD. BUFFET ATTENDED \$75 (OPTIONAL) ALCOHOL, TAX, & SERVICE CHARGE ARE ADDED ON TO THE BILL
248.737.7463 • NATASHA@PRIMECONCEPTSDETROIT.COM



LUNCH OPTION ONE

LUNCH MENU PRICE \$35.

Includes soft drinks and coffee. Does not include alcoholic beverage, tax and 22% service charge.

APPETIZERS | PRESELECT ONE

PORTOBELLA MUSHROOM

SEAFOOD CAKE

HUMMUS & PITA

TOMATO BRUSCHETTA

ENTRÉE COURSE | PRESELECT ONE

MEDITERRANEAN CHOP SALAD

Romaine, Tomatoes, Cucumbers, Olives, Ceci Bean, Onion, Feta, Lemon Vinaigrette

CAESAR SALAD

romaine, parmesan, croutons

PROTEIN | CHOOSE ONE DAY OF EVENT

FAROE ISLAND SALMON

GRILLED ORGANIC CHICKEN

DESSERTS | PRESELECT ONE

CHEESECAKE

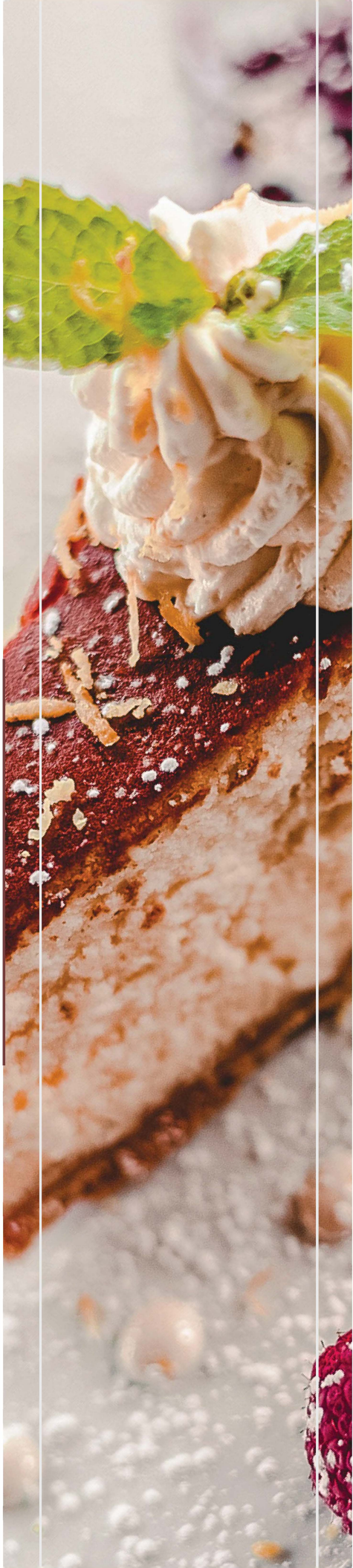
BERRY SORBET

FRESH FRUIT

VANILLA ICE CREAM

ASK US ABOUT MENU ITEMS THAT ARE COOKED TO ORDER OR SERVED RAW. CONSUMING RAW OR UNDERCOOKED MEATS, POULTRY, SEAFOOD, SHELLFISH, OR EGGS MAY INCREASE YOUR RISK OF FOODBORNE ILLNESS

248.737.7463 • NATASHA@PRIMECONCEPTSDETROIT.COM



LUNCH OPTION TWO

LUNCH MENU PRICE \$45.

*Includes a complete entrée set, soft drinks and coffee.
Does not include alcoholic beverage, tax and 22% service charge.*

APPETIZERS | PRESELECT TWO

- CRISPY CALAMARI
- MOZZARELLA CAPRESE
- PORTOBELLA MUSHROOM
- SEAFOOD CAKE
- VEGETARIAN SPRING ROLLS
- HUMMUS & PITA
- PRIME MEATBALLS
- IMPORTED CHEESE & FRUIT
- SWEET + SPICY SESAME CHICKEN BITES

SALADS | PRESELECT ONE

- MEDITERRANEAN CHOP SALAD**
*Romaine, Tomatoes, Cucumbers, Olives, Ceci Bean,
Onion, Feta, Lemon Vinaigrette*
- CAESAR SALAD**
romaine, parmesan, croutons

ENTRÉE COURSE | CHOOSE ONE DAY OF EVENT

- FAROE ISLAND SALMON
- ORGANIC LEMON CHICKEN
- BEEF TIPS**
fried rice, peppers, onions, mushrooms, coconut curry sauce

DESSERTS | PRESELECT ONE

- CHEESECAKE
- FRESH **FRUIT**
- VANILLA ICE CREAM

ASK US ABOUT MENU ITEMS THAT ARE COOKED TO ORDER
OR SERVED RAW. CONSUMING RAW OR UNDERCOOKED
MEATS, POULTRY, SEAFOOD, SHELLFISH, OR EGGS MAY
INCREASE YOUR RISK OF FOODBORNE ILLNESS

248.737.7463 • NATASHA@PRIMECONCEPTSDETROIT.COM

LUNCH OPTION THREE

LUNCH MENU PRICE \$55.

Includes a complete entrée set, soft drinks and coffee. Does not include alcoholic beverage, tax and 22% service charge.

****If this option is selected it counts for two.*

APPETIZERS | PRESELECT THREE

CRISPY CALAMARI
MOZZARELLA CAPRESE
PORTOBELLA MUSHROOM
SEAFOOD CAKE
VEGETARIAN SPRING ROLLS
HUMMUS & PITA
PRIME MEATBALLS
IMPORTED CHEESE & FRUIT
BEEF TIPS
AHI TUNA TARTAR
COCONUT SHRIMP
SWEET + SPICY SESAME CHICKEN BITES

SALADS | PRESELECT ONE

MEDITERRANEAN CHOP SALAD
Romaine, Tomatoes, Cucumbers, Olives, Ceci Bean, Onion, Feta, Lemon Vinaigrette

CAESAR SALAD
romaine, parmesan, croutons

ENTRÉE COURSE | CHOOSE THREE DAY OF EVENT

FAROE ISLAND SALMON
ORGANIC LEMON CHICKEN
6OZ FILET MIGNON
PASTA PRIMAVERA
FILET & CHICKEN DUO***

DESSERTS | PRESELECT ONE

CHEESECAKE
FRESH FRUIT
VANILLA ICE CREAM

ASK US ABOUT MENU ITEMS THAT ARE COOKED TO ORDER OR SERVED RAW. CONSUMING RAW OR UNDERCOOKED MEATS, POULTRY, SEAFOOD, SHELLFISH, OR EGGS MAY INCREASE YOUR RISK OF FOODBORNE ILLNESS

248.737.7463 • NATASHA@PRIMECONCEPTSDETROIT.COM





DINNER OPTION ONE

DINNER MENU PRICE \$55.

Includes a complete entrée set, soft drinks and coffee. Does not include alcoholic beverage, tax and 22% service charge.

APPETIZERS | PRESELECT THREE

CRISPY CALAMARI
MOZZARELLA CAPRESE
PORTOBELLA MUSHROOM
SEAFOOD CAKE
VEGETARIAN SPRING ROLLS
HUMMUS & PITA
PRIME MEATBALLS
SWEET + SPICY SESAME CHICKEN BITES

SALADS | PRESELECT ONE

MEDITERRANEAN CHOP SALAD
Romaine, Tomatoes, Cucumbers, Olives, Ceci Bean, Onion, Feta, Lemon Vinaigrette

CAESAR SALAD
romaine, parmesan, croutons

ENTRÉE COURSE | CHOOSE THREE DAY OF EVENT ONE ENTRÉE PER GUEST

FAROE ISLAND SALMON
ORGANIC LEMON CHICKEN
PASTA PRIMAVERA
BEEF TIPS
fried rice, peppers, onions, mushrooms, coconut curry sauce

DESSERTS | PRESELECT ONE

CHEESECAKE
FRESH FRUIT
VANILLA ICE CREAM

**ASK US ABOUT MENU ITEMS THAT ARE COOKED TO ORDER
OR SERVED RAW. CONSUMING RAW OR UNDERCOOKED
MEATS, POULTRY, SEAFOOD, SHELLFISH, OR EGGS MAY
INCREASE YOUR RISK OF FOODBORNE ILLNESS**

248.737.7463 • NATASHA@PRIMECONCEPTSDETROIT.COM

DINNER OPTION TWO

DINNER MENU PRICE \$65.

Includes a complete entrée set, soft drinks and coffee. Does not include alcoholic beverage, tax and 22% service charge.

****If this option is selected it counts for two.*

APPETIZERS | PRESELECT THREE

CRISPY CALAMARI
MOZZARELLA CAPRESE
PORTOBELLA MUSHROOM
SEAFOOD CAKE
VEGETARIAN SPRING ROLLS
HUMMUS & PITA
PRIME MEATBALLS
BEEF TIPS
AHI TUNA TARTAR
IMPORTED CHEESE & FRUIT
SWEET + SPICY SESAME CHICKEN BITES

SALADS | PRESELECT ONE

MEDITERRANEAN CHOP SALAD
Romaine, Tomatoes, Cucumbers, Olives, Ceci Bean, Onion, Feta, Lemon Vinaigrette

CAESAR SALAD
romaine, parmesan, croutons

ENTRÉE COURSE | CHOOSE THREE DAY OF EVENT ONE ENTRÉE PER GUEST

FAROE ISLAND SALMON
ORGANIC LEMON CHICKEN
6OZ FILET MIGNON
FILET & CHICKEN DUO***
PASTA PRIMAVERA

DESSERTS | PRESELECT ONE

CHEESECAKE
FRESH FRUIT
VANILLA ICE CREAM

ASK US ABOUT MENU ITEMS THAT ARE COOKED TO ORDER OR SERVED RAW. CONSUMING RAW OR UNDERCOOKED MEATS, POULTRY, SEAFOOD, SHELLFISH, OR EGGS MAY INCREASE YOUR RISK OF FOODBORNE ILLNESS

248.737.7463 • NATASHA@PRIMECONCEPTSDETROIT.COM



DINNER OPTION THREE

DINNER MENU PRICE \$75.

Includes a complete entrée set, soft drinks and coffee. Does not include alcoholic beverage, tax and 22% service charge.

****If this option is selected it counts for two.*

APPETIZERS | PRESELECT THREE

CRISPY CALAMARI
MOZZARELLA CAPRESE
PORTOBELLA MUSHROOM
HUMMUS & PITA
BEEF TIPS
AHI TUNA TARTAR
IMPORTED CHEESE & FRUIT
GRILLED TIGER SHRIMP
OYSTERS DE PARIS
RAW OYSTERS
KING CRAB GNOCCHI
JUMBO SHRIMP COCKTAIL
SUPER LUMP CRAB CAKES
SWEET + SPICY SESAME CHICKEN BITES

SALADS | PRESELECT ONE

MEDITERRANEAN CHOP SALAD
Romaine, Tomatoes, Cucumbers, Olives, Ceci Bean, Onion, Feta, Lemon Vinaigrette

CAESAR SALAD
romaine, parmesan, croutons

ENTRÉE COURSE | CHOOSE THREE DAY OF EVENT ONE ENTRÉE PER GUEST

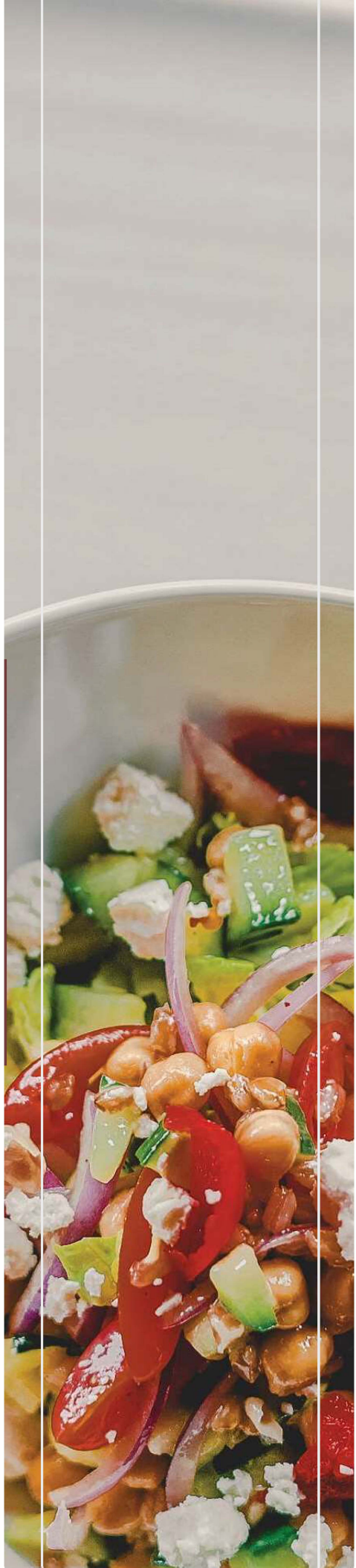
FAROE ISLAND SALMON
ORGANIC LEMON CHICKEN
8OZ FILET MIGNON
PASTA PRIMAVERA
FILET & CHICKEN DUO***

DESSERTS | PRESELECT ONE

CHEESECAKE
FRESH FRUIT
CHOCOLATE CAKE
VANILLA ICE CREAM

**ASK US ABOUT MENU ITEMS THAT ARE COOKED TO ORDER
OR SERVED RAW. CONSUMING RAW OR UNDERCOOKED
MEATS, POULTRY, SEAFOOD, SHELLFISH, OR EGGS MAY
INCREASE YOUR RISK OF FOODBORNE ILLNESS**

248.737.7463 • NATASHA@PRIMECONCEPTSDETROIT.COM



DINNER OPTION FOUR

DINNER MENU PRICE \$85.

Includes a complete entrée set, soft drinks and coffee. Does not include alcoholic beverage, tax and 22% service charge.

****If this option is selected it counts for two.*

APPETIZERS | PRESELECT FOUR

CRISPY CALAMARI
MOZZARELLA CAPRESE
PORTOBELLA MUSHROOM
HUMMUS & PITA
BEEF TIPS
AHI TUNA TARTAR
IMPORTED CHEESE & FRUIT
GRILLED TIGER SHRIMP
OYSTERS DE PARIS
RAW OYSTERS
KING CRAB GNOCCHI
JUMBO SHRIMP COCKTAIL
SUPER LUMP CRAB CAKES
SWEET + SPICY SESAME CHICKEN BITES

SALADS | PRESELECT ONE

MEDITERRANEAN CHOP SALAD
Romaine, Tomatoes, Cucumbers, Olives, Ceci Bean, Onion, Feta, Lemon Vinaigrette

CAESAR SALAD
romaine, parmesan, croutons

ENTRÉE COURSE | CHOOSE THREE DAY OF EVENT ONE ENTRÉE PER GUEST

16OZ RIBEYE
CHILEAN SEABASS
ORGANIC LEMON CHICKEN
PASTA PRIMAVERA
CHICKEN PARMESAN

DESSERTS | PRESELECT ONE

CHEESECAKE
FRESH FRUIT
CHOCOLATE CAKE
VANILLA ICE CREAM

**ASK US ABOUT MENU ITEMS THAT ARE COOKED TO ORDER
OR SERVED RAW. CONSUMING RAW OR UNDERCOOKED
MEATS, POULTRY, SEAFOOD, SHELLFISH, OR EGGS MAY
INCREASE YOUR RISK OF FOODBORNE ILLNESS**

248.737.7463 • NATASHA@PRIMECONCEPTSDETROIT.COM



DINNER OPTION FIVE

DINNER MENU PRICE \$125.

Includes a complete entrée set, soft drinks and coffee. Does not include alcoholic beverage, tax and 22% service charge.

****If this option is selected it counts for two.*

APPETIZERS | PRESELECT FOUR

CRISPY CALAMARI
MOZZARELLA CAPRESE
PORTOBELLA MUSHROOM
HUMMUS & PITA
BEEF TIPS
AHI TUNA TARTAR
IMPORTED CHEESE & FRUIT
GRILLED TIGER SHRIMP
OYSTERS DE PARIS
RAW OYSTERS
KING CRAB GNOCCHI
JUMBO SHRIMP COCKTAIL
SUPER LUMP CRAB CAKES
SWEET + SPICY SESAME CHICKEN BITES

SALADS | PRESELECT ONE

MEDITERRANEAN CHOP SALAD

Romaine, Tomatoes, Cucumbers, Olives, Ceci Bean, Onion, Feta, Lemon Vinaigrette

CAESAR SALAD

romaine, parmesan, croutons

ENTRÉE COURSE | CHOOSE THREE DAY OF EVENT ONE ENTRÉE PER GUEST

SURF & TURF - 6OZ FILET | 7OZ LOBSTER TAIL
ORGANIC LEMON CHICKEN
CHICKEN PARMESAN
16OZ RIBEYE
CHILEAN SEABASS
LAMB CHOPS
TOMAHAWK | +25 PP

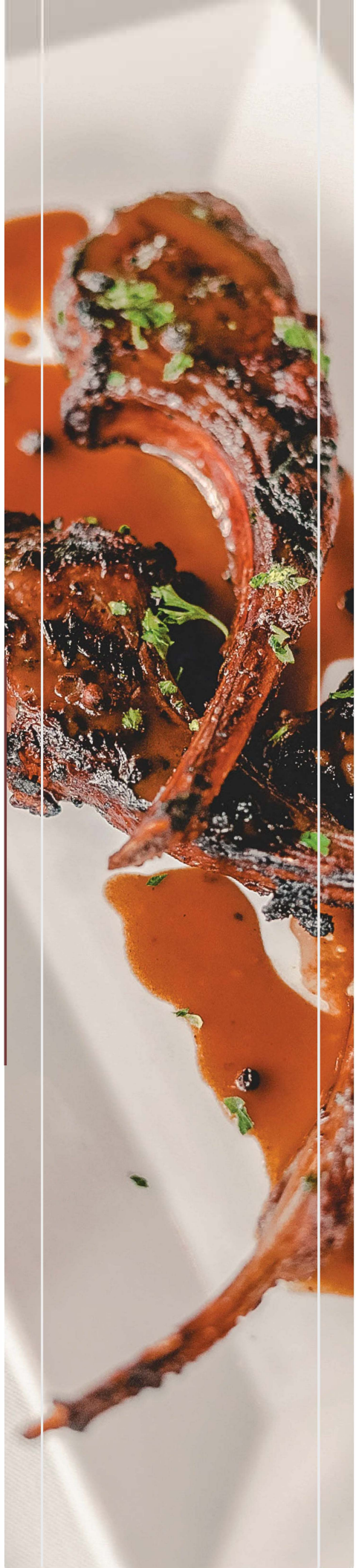
DESSERTS | PRESELECT ONE

CHEESECAKE
FRESH FRUIT
CHOCOLATE CAKE
VANILLA ICE CREAM

ASK US ABOUT MENU ITEMS THAT ARE COOKED TO ORDER OR SERVED RAW. CONSUMING RAW OR UNDERCOOKED MEATS, POULTRY, SEAFOOD, SHELLFISH, OR EGGS MAY INCREASE YOUR RISK OF FOODBORNE ILLNESS

248.737.7463 • NATASHA@PRIMECONCEPTSDETROIT.COM





SHAREABLE SIDES

(ADDITIONAL CHARGE | DINNER MENU PRICE)

- ASPARAGUS \$14
- SPINACH \$10
- BRUSSELS SPROUTS \$11
- WILD MUSHROOMS \$12
- CREAMED TRUFFLE CORN \$16
- MAC & CHEESE \$10
- LOBSTER MAC & CHEESE \$27
- TRUFFLE FRIES \$13
- SPINACH ARTICHOKE DIP \$13
- ALMONDINE GREEN BEANS \$13
- GARLIC MASHED POTATOES \$13

KID'S DINING OPTIONS

\$25 PER CHILD - PLEASE SELECT ONE

- CHICKEN FINGERS + FRIES
- SLIDERS + FRIES
- MACARONI + CHEESE
- VANILLA ICE CREAM + CHOCOLATE SAUCE

EXCELLENT QUALITY & EXCEPTIONAL SERVICE

ASK US ABOUT MENU ITEMS THAT ARE COOKED TO ORDER
OR SERVED RAW. CONSUMING RAW OR UNDERCOOKED
MEATS, POULTRY, SEAFOOD, SHELLFISH, OR EGGS MAY
INCREASE YOUR RISK OF FOODBORNE ILLNESS

248.737.7463 • NATASHA@PRIMECONCEPTSDETROIT.COM